



**How to add a single sub-door station to
the main door station** (Through the door station interface)

Title:	How to add a single sub-door station to the main door station	Version:	v1.0	Date:	2020/11/24
Product:	Video Intercom			Page:	1 of 2

Preparation

1. This guide takes

Type	Model	Version
Indoor station	DS-KH8520-WTE1	V2.1.10_200713
Door station*2	DS-KV8413-WME1(B)	V2.2.3_200805

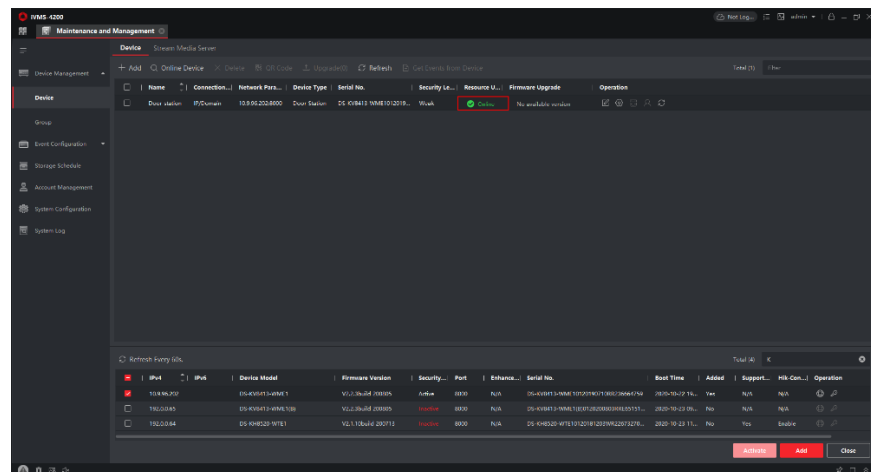
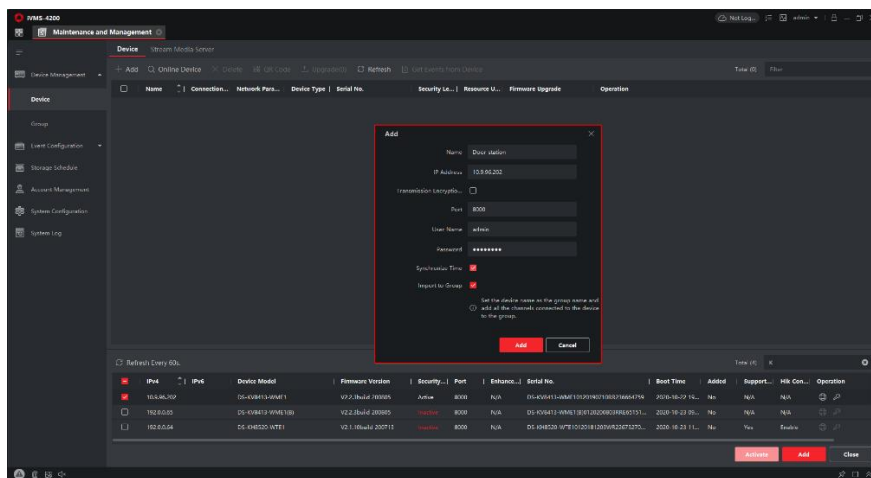
As examples to introduce register sub-door station to main door station.

2. Software: iVMS-4200 Version 3.4.0.9

How to add a single sub-door station to the main door station (Through the door station interface)

1) Add Devices on iVMS-4200

- 1) Search for online devices and add the door station on iVMS-4200, enter username and password, and then confirm that the device is online.

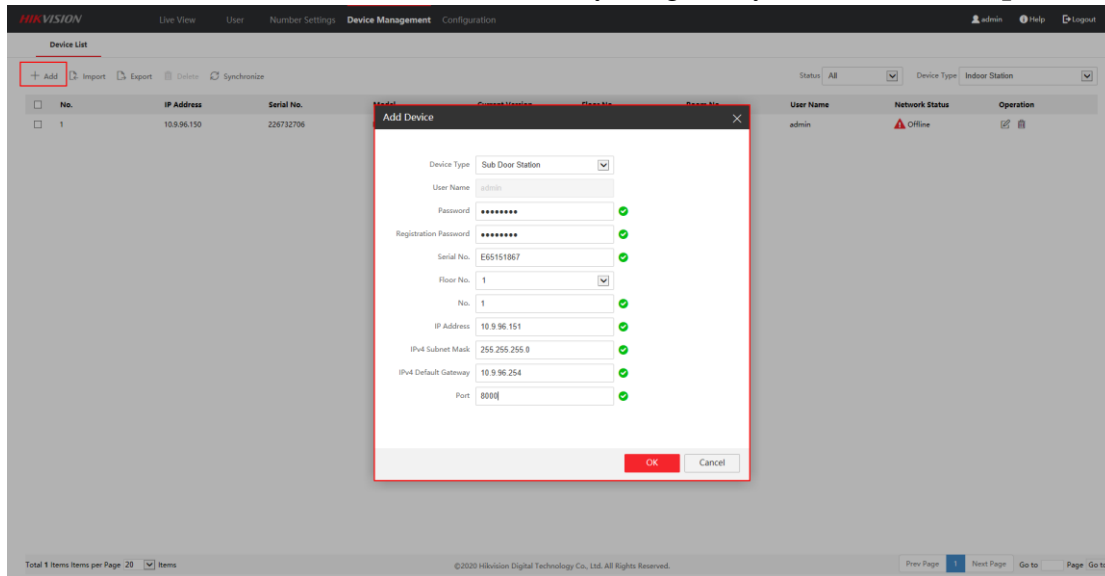


Title:	How to add a single sub-door station to the main door station	Version:	v1.0	Date:	2020/11/24
Product:	Video Intercom			Page:	2 of 2

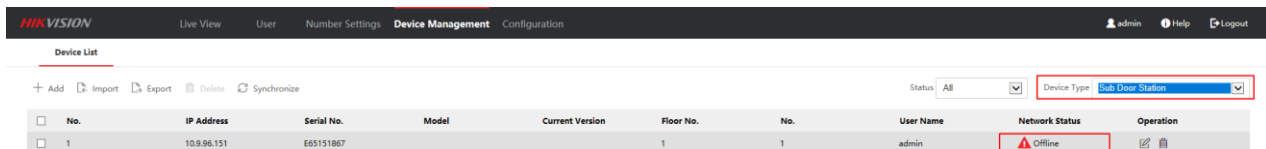
2) Register Sub Door Station to Door station on Main Door Station Remote

Configuration interface

- 1) Go to **Device Management** → **Add**, set the **Device Type** as Sub Door Station, fill in the necessary info of the device, The **registration password** is the password that must be configured for the activated device. When the door station adds an activated indoor station, the registration password of the indoor station must be known. The inactive indoor station can be directly assigned by door station. The **port** is 8000.



- 2) When we complete the device info, you will see the page as shown below.



- 3) Wait 5 to 10 minutes, the devices will be online.





See Far, Go Further